

Change Bulletin

No: CB013

Rev: 0

Date: 18 July 2007

Description: Modify Split Block Adapter for Lubricant Injection



Tesco Corporation
6204 – 6A Street SE
Calgary, AB. T2H 2B7
Phone: (403) 692 5700
www.tescocorp.com

BACKGROUND INFORMATION:

This bulletin addresses two issues involving the pins used in the 250T EMI400 split block adaptor; one issue deals with the lubrication of the pins, the second issue deals with the secondary retention of the pin.

Pin Lubrication:

In a rotating bearing application it is common practice to inject grease from the unloaded side of the bearing; however, for stationary pins it is necessary to inject grease into the loaded side to ensure proper lubrication of the contacting surfaces. On the EMI 400 split block adaptor (Figure 1), the location of the pin retention bolt holes on the right side of the split block adaptor cause this pin to be oriented with grease holes oriented to the loaded side (desired); however, on the left (driller's) side of the split block adapter the pin was oriented with the grease holes to the unloaded side.

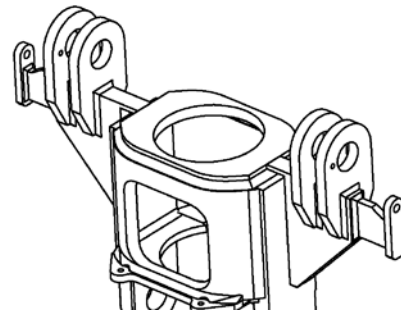
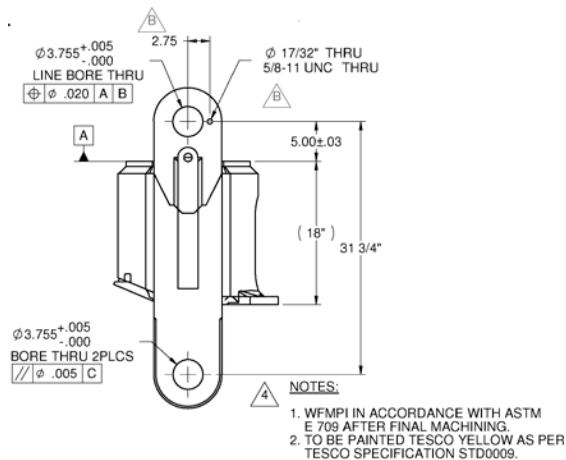


Figure 1 – Former Pin Retention Bolt Hole Location on Split Block Adapter

In order to address this, the pin retention bolt hole has been relocated on the driller's side (Figure 2) to provide for the correct pin orientation

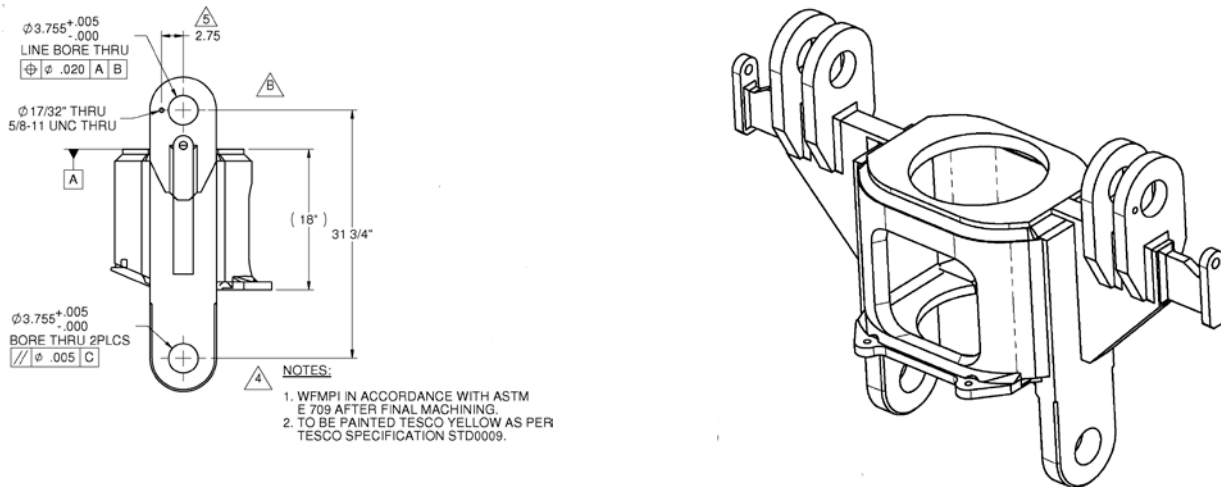


Figure 2 – Corrected Bolt Hole Locations on Split Block Adapter

Pin Retention:

The load pins used in the 250T EMI 400 split block adaptor are retained by means of a single retention bolt. The use of a single bolt did not allow for application of a positive secondary locking mechanism. To address this the retention bolt was changed to a drilled head fastener and a second drilled head fastener was added to the pin extraction hole allowing safety wire to be used as a secondary locking means as shown in Figure 3.



Figure 3 – Bolt with Loctite and Safety Wire installed in Extraction Hole

These changes are fully documented in ECN 130-0012

AFFECTED PRODUCT:

All 250T EMI 400 top drives incorporating split block adaptors manufactured before approximately August 2007.

The updated drawing for part# 730798 is shown in Figure 4:

ACTION REQUIRED:

Split block adaptors current in field use may be updated by drilling and tapping a new retention hole in the driller's side split block adaptor ear using dimensions shown in Figure 2 and illustrated in Figure 4.

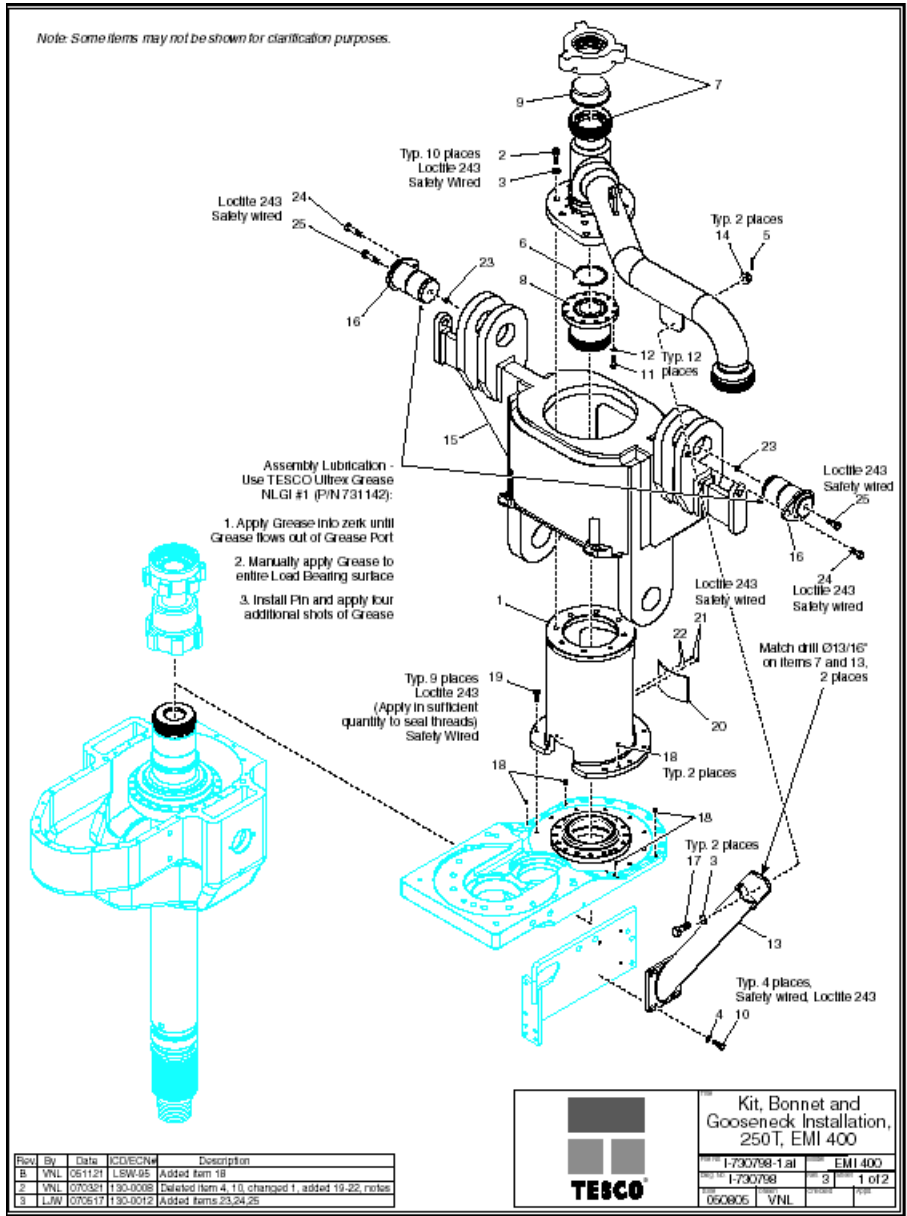


Figure 4 – Correct pin orientation (Items 16) and additional bolts for secondary retention (Items 25)

Contact your local TESCO Parts and Service Center for further information regarding this bulletin and or supply of affected components noted above.