


<b>Technical Bulletin</b>		
<b>No: TB075</b>	<b>Rev: 0</b>	<b>Date: 10Feb2010</b>
<b>Elevator Link Bushing Upgrade 150T-EMI-400 Top Drive Systems</b>		 <p>Tesco Corporation 3993 W. Sam Houston Pkwy N. Suite 100 Houston, Texas 77043 Phone: (713) 359-7000 <a href="http://www.tescocorp.com">www.tescocorp.com</a></p>

**BACKGROUND INFORMATION:**

TESCO Engineering and the Quality Control department have carried out an investigation and identified incidents in the field where the current 150T-EMI-400 elevator link-tilt design (Figure 5) permits the elevator links to make contact with the gearbox/swivel and split block adapter during top drive operation (Figure 1). This results in the gradual wear to the components (Figure 2).

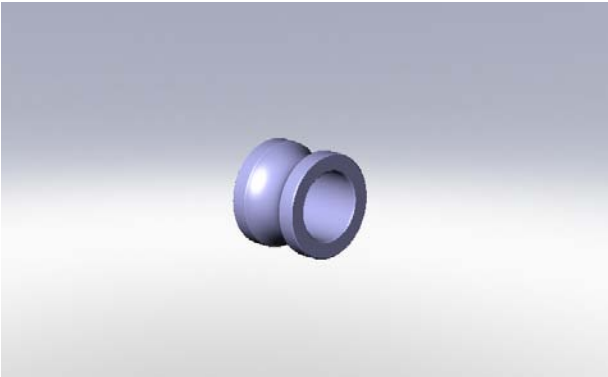


**Figure 1:** Elevator link in contact with gearbox and split block adapter

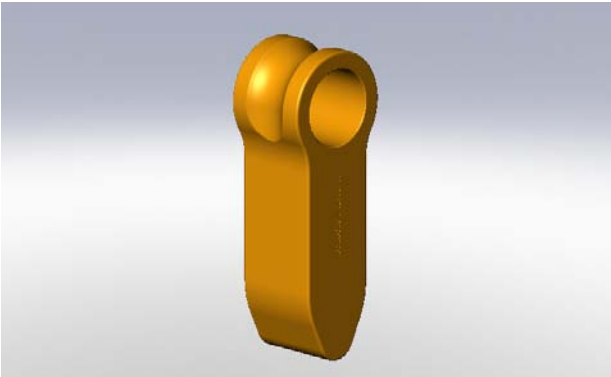


**Figure 2:** Wear evident on split block adapter as a result of continuous contact with elevator link

Although this will not immediately jeopardize the integrity of the top drive unit or affect the critical load path, TESCO has developed a new elevator link bushing (Figure 4) that ensures top drive operation will not be disrupted as a result of wear. The new elevator link bushing design restricts vertical movement of the elevator links (Figure 6), preventing them from coming into contact with the gearbox/swivel and split block adapter.

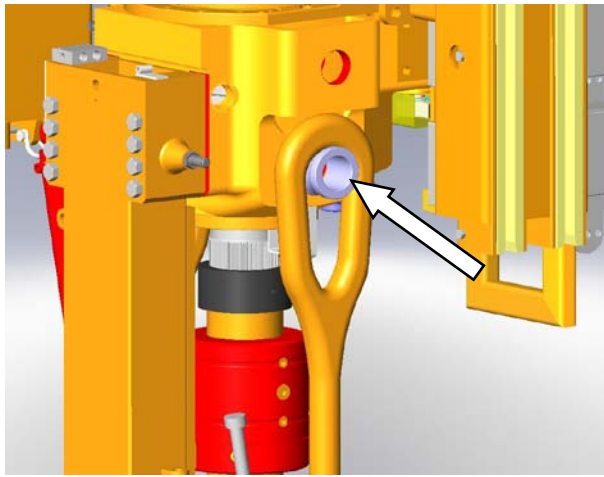


**Figure 3:** Elevator link bushing currently used

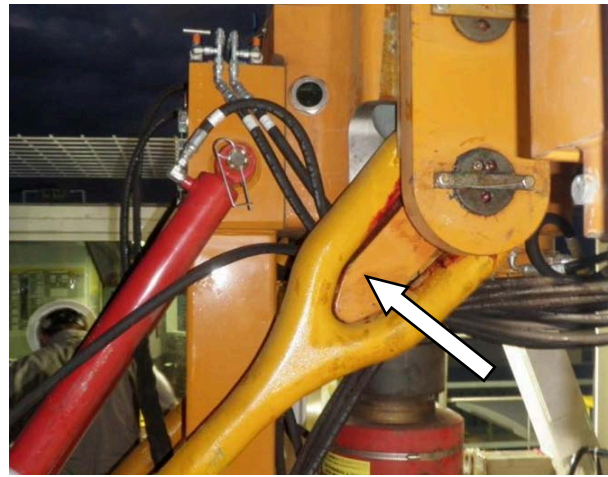


**Figure 4:** New elevator link bushing

TESCO® is a registered trademark in the United States and Canada. TESCO CASING DRILLING® is a registered mark in the United States. CASING DRILLING® is a registered mark in Canada and CASING DRILLING™ is a trademark in the United States. Casing Drive System™, CDS™, Multiple Control Line Running System™ and MCLRS™ are trademarks in the United States



**Figure 5:** Current elevator link bushing design allows excessive vertical link movement (split block adapter not shown for clarity)



**Figure 6:** New elevator link bushing design limits vertical elevator link movement

**AFFECTED PRODUCTS:**

All 150T-EMI-400 Top Drive Systems.

**ACTION REQUIRED:**

Visually inspect the gearbox and split block adapter for any wear. TESCO personnel can assist in identifying acceptable wear limits. TESCO Business Units and customers operating the TESCO 150T-EMI-400 Top Drive System are encouraged to upgrade their units to the new elevator link bushing design. The elevator link bushing design can be obtained through TESCO AMSS.

Refer to the following table when ordering parts for the new elevator link bushing design.

TESCO PN	Quantity	TESCO DESCRIPTION
810215	2	Pin,Link,Elevator,150T-EMI-400
820337	2	Bushing,Link,Elevator,150T-EMI-400
820360	1	Bracket,Hose,150T-EMI-400

*Better Ways to The Bottom™*

**Contact your local TESCO Parts and Service Center for further information regarding this bulletin and or supply of affected components noted above.**