



Model: TM80/TM100

Nov. 13, 2024

Serial #: See Table 1

Product Bulletin # TM-033 Rev 1

Tong Valve Bracket Improvement

On some Canrig Torq-Matic™ Wrenches, the end of the mounting bracket where the tong valve bolts may break off and/or the mounting hardware for the tong valve assembly may break due to vibration resulting in damage to the valve bank. A new mounting bracket has been designed to support the valve bank from below, taking the strain off the mounting hardware. This new bracket will significantly reduce failures and minimize damage to the valve bank if the mounting hardware fails.

NOTICE

Installing the new tong valve assembly bracket is not a required upgrade. It is an optional change that may be implemented for improved reliability.



Figure 1: Current tong valve assembly



Figure 2: Tong valve assembly after failed mounting hardware

Affected Units

This affects all Wrench models TM80 and TM100. Please see Table 1 below for affected serial numbers.

Table 1: TM Wrench Serial Numbers Affected

| Model | Serial Numbers |
|-------|---------------------|
| TM80 | TM800001 – TM800300 |
| TM100 | TM100001 – TM100081 |



Model: TM80/TM100

Serial #: See Table 1

Nov. 13, 2024

Recommended Actions

If you decide to install the revised bracket mount on Wrench models TM80/100, order the kit (Canrig P/N: AY25947) including the new bracket and required mounting hardware.

Contact Canrig Part Sales to order this kit (part.sales@canrig.com). See Table 2 for kit contents.

Table 2: Bracket Kit, Tong Valve Mounting, TM80/100 (AY25947)

| Item | Qty | Units | Description | P/N |
|------|-----|-------|---------------------------------------|--------------------|
| 1 | 1 | Each | BRACKET, TONG VLV MTG, ARM, TM80/100 | DT52744 |
| 2 | 3 | Pair | LOCKWASHER, 5/16 NORD-LOCK SP | LW-0312-NL-SP |
| 3 | 3 | Each | CAPSCR, HEX HD, M8 x 25MM, GR8.8 | HH-M8-25MM-GR8 |
| 4 | 2 | Each | LOCKWASHER, 1/2 NORD-LOCK, SP | LW-0500-NL-SP |
| 5 | 2 | Each | CAPSCR, HEX HD, 1/2-13UNC x 2.00, GR8 | HH-0500NC-0200-GR8 |

Modification Instruction

NOTICE

See drawing # AY25947 for further details.

1. Lock out/tag out (LOTO) the wrench prior to starting this procedure.

WARNING

Ensure there is no pressure on the hydraulic lines connected to the valve bank.

2. Remove hoses from the valve bank, if necessary. Remove the valve bank from existing support brackets and then remove existing support brackets from the frame.
3. Install the new bracket to the frame using items 4 and 5, as shown in Figure 3 on page 3.
4. Install the valve bank to the new bracket using items 2 and 3, as shown in Figure 3 on page 3.
5. Reconnect hoses to the valve bank, if removed on step 2.
6. Remove LOTO.

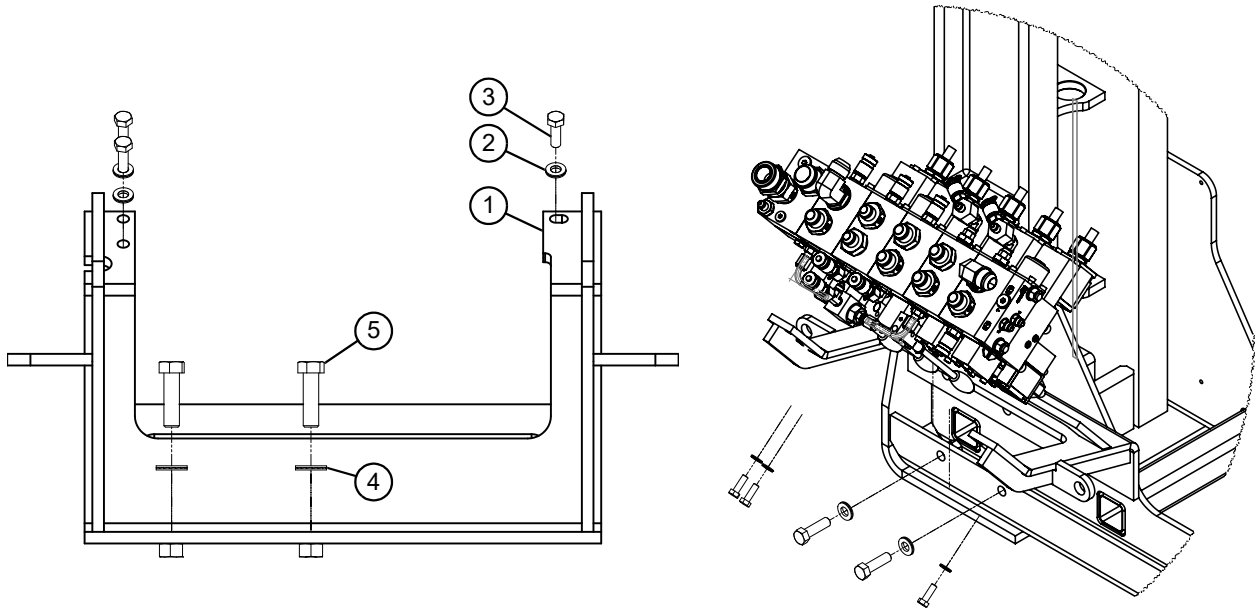


Figure 3: New support bracket design as shown

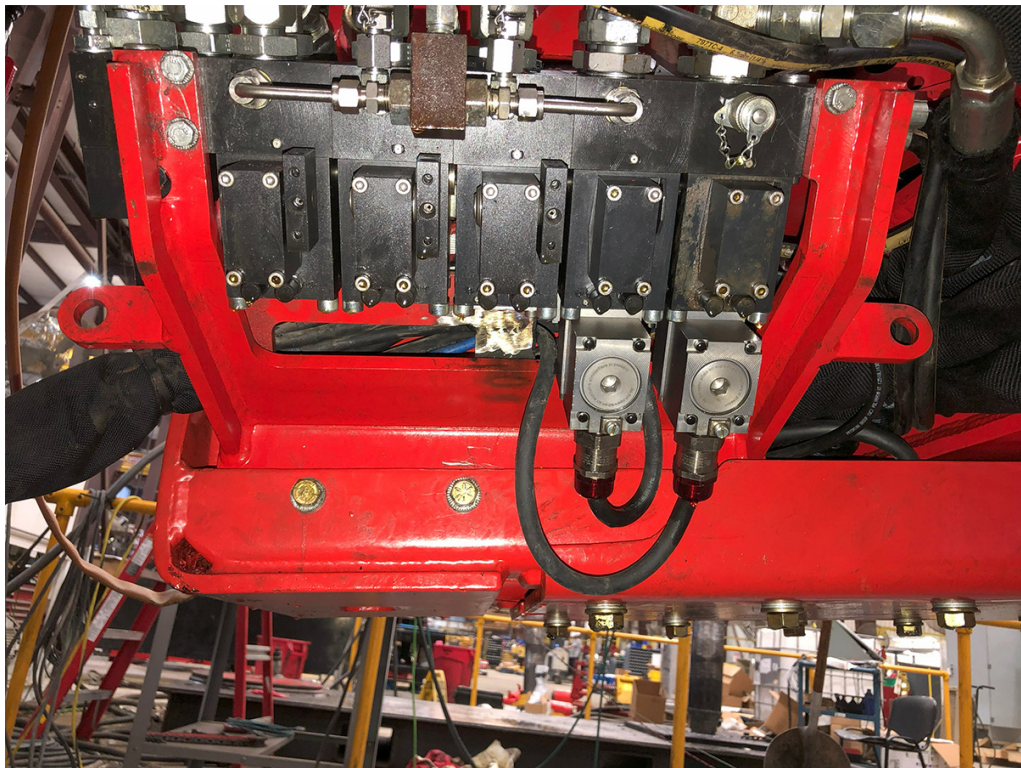


Figure 4: Modification of valve assembly bracket